

COLOUR LASER PRINTER Epson AcuLaser™ CX37DN

EPSON
EXCEED YOUR VISION

AT THE CORE OF WORKGROUP PRODUCTIVITY

High reliability, multifunctional convenience & low running cost.

IMAGING INNOVATION

The Epson AcuLaser™ CX37DN answers your need for optimum workgroup productivity, backed by its superb reliability, multifunctional features, networking support and low running cost.

- **High Efficiency and Reliability For Workgroups**

Fast print speed of 24 ppm in colour or black-and-white, with Gigabit Ethernet support and class-leading maximum monthly duty cycle of 120,000 pages. Auto Switching to monochrome mode when colour toner is depleted ensures minimum downtime.

- **Low Running Cost**

Compactly sized toner cartridges deliver ultra-low cost-per-page. Reduce paper and energy consumption with automatic double-sided printing and power efficient modes.

- **Multifunctional Convenience**

Integrated print, scan and copy functions with direct scan to email, USB, FTP and SMB, plus direct printing from USB*.

*with installation of optional hard disk



Print



Scan



Copy



Ethernet



Standard
Duplex



Monthly
Duty Cycle



IMAGING INNOVATION

The Epson AcuLaser™ CX37DN is a multifunctional powerhouse for workgroups that require high reliability and convenient mix of features, with all the benefits of power efficiency and low running cost.

High Efficiency and Reliability For Workgroups

Speed and reliability is of the essence when serving a workgroup. The Epson AcuLaser™ CX37DN prints 24 ppm in colour or black-and-white, and carries its weight with a class-leading monthly duty cycle of 120,000 pages. Printing over the network is smooth and efficient with its support for Gigabit Ethernet, while smart features like Auto Switching to monochrome mode ensures that urgent print jobs are not disrupted when colour toner needs replenishment.

Compactly sized
toner cartridges
Page yield:
6,000 pages



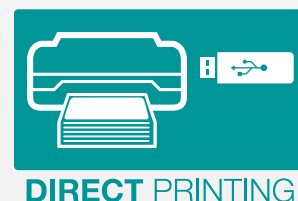
Low Running Cost

Compactly sized toner cartridges save storage space in your office without compromising on page yield. Double-pack black toner cartridges further reduces cost-per-page. The Auto Duplexing function comes standard to help reduce paper consumption, while energy consumption is lowered by a suite of power efficient modes.

- **Sleep Mode:** sets the period of inactivity from 3 to 120 minutes before the printer goes into sleep mode.
- **Toner Save Mode:** reduces toner consumption while maintaining superb print quality.

Multifunctional Convenience

The Epson AcuLaser™ CX37DN brings optimum productivity to your office with its integrated printing, scanning and copying functions. By way of its networkability, it also offers the convenience of directly scanning to email addresses, FTP and SMB servers, or even USB devices. Scans are stored as JPG, PDF or TIFF files for easy exchange and compatibility. With the installation of the optional 40GB hard disk drive (HDD), you can also print urgently needed files directly from an external USB device.



Print and Media Flexibility for Every Need

As your business expands, the Epson AcuLaser™ CX37DN is right there with you. Expand its paper handling capacity from a standard 350 sheets to 850 sheets with the addition of a 500-sheet cassette. RAM can also be upgraded from 256 MB to 768 MB for faster job processing. The Epson AcuLaser™ CX37DN also supports a wide range of media types and sizes including envelopes, labels and postcards.



Secure Printing of Confidential Documents

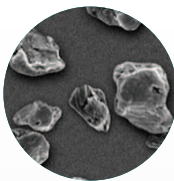
Networks are vital for business but carry the risk of unauthorised personnel access. With its support for IPSec/SSL encryption, the Epson AcuLaser™ CX37DN allows secure printing of sensitive and confidential documents while minimising the risk of information leakage.

Vibrant and High Quality Printing

The Epson AcuLaser™ CX37DN uses Epson AcuBrite™ toners that ensure uniform toner particle size and wax distribution, giving you consistently rich image quality that impresses. Through this unique printing technology, you get superb clarity with sharpness and outstandingly crisp and bold black text that lasts.

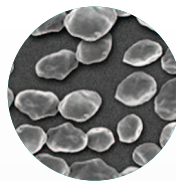


Uniform Image Quality



Conventional Toner

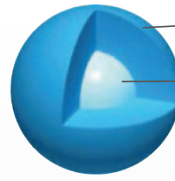
Average particle size: 8.0 micron
Particle shape: non-uniform



Epson AcuBrite™ Toner

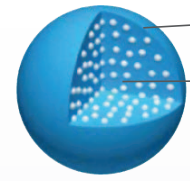
Average particle size: 5.8 micron
Particle shape: uniform

Uniform Distribution of Pigment and Wax



Conventional Toner

Toner
Wax



Epson AcuBrite™ Toner

Toner
Ideal wax quantity and distribution

Better for Our Environment



Accredited under the Energy Star programme, a government initiative spearheaded by the United States that promotes the use of energy-efficient products, the Epson AcuLaser™ CX37DN offers a number of energy-saving features that will help you enjoy significant energy savings and also do your part in protecting our environment. Its specially designed compact toner cartridges not only reduce material wastage, the printer and toner cartridges are also made using recycled materials and ozone-free parts to reduce the burden on our environment.

Partners in Perfection

Epson GT-S55/S85 Sheetfed Scanners

A fast, compact and efficient partner for all your office document digitisation needs. Powerful features allow you to scan and archive 2-sided documents in a single pass, or share amazing quality images with accurate colour reproduction.



Epson EB-G5000 Series Projectors

Experience brilliant image quality with the world's number 1 projectors*. High powered projection solutions that offer reliability and outstanding performance in every environment. Epson 3LCD projectors offer superior colour luminance, producing vivid and sharp images.



*Source: Futuresource Consulting

Colour Laser Printer

Epson AcuLaser™ CX37DN

SPECIFICATIONS

Weight without consumables: 27.7 kg (61.1 lb)
Weight with consumables: 32.5 kg (71.7 lb)



MODEL		CX37DN
PRINTER TYPE PRINTING METHOD RESOLUTION PROCESSOR		Laser Single Pass 600 x 600 dpi 800 MHz
PRINT FEATURES PRINT SPEED FIRST PAGE OUT TIME WARM UP TIME MAXIMUM MONTHLY VOLUME		24 ppm (Bk/Ci) Less than 16 sec (Bk/Ci) Less than 39 sec (from Off to Ready) Less than 39 sec (from Sleep to Ready) Up to 120,000 pages / month
COPY FEATURES COPY RESOLUTION COPY SPEED FIRST COPY OUT TIME MULTIPLE COPIES ADF CONTINUOUS COPY		Up to 600 x 600 dpi Up to 24 cpm (Bk/Ci) Less than 11 sec (A4 Mono) Less than 16 sec (A4 Colour) 1 – 99 sheets Up to 15 sheets
SCAN FEATURES SCANNING METHOD SCAN RESOLUTION COLOUR DEPTH ADF CAPACITY SCAN AREA SCAN-TO FUNCTIONS		Flatbed, ADF colour scan Up to 600 x 600 dpi 24 bit (Colour), 8 bit (Grayscale) Up to 15 sheets Up to 215.9 x 297 mm Up to 215.9 x 355.6 mm Scan to Email, FTP (server), SMB and USB memory devices TIFF (rev. 6.0), PDF (ver. 1.2) and JPEG
PAPER HANDLING STANDARD PAPER INPUT STANDARD PAPER CASSETTE MULTI-PURPOSE TRAY MAXIMUM PAPER INPUT MAXIMUM PAPER OUTPUT		Up to 350 sheets From multi-purpose tray: 100 sheets From standard paper cassette: 250 sheets Plain paper (60 ~ 90 gsm), Special paper (60 ~ 210 gsm), Postcard A4, A5, B5, A6, B6, LT, GLT, EXE, HLT/Statement, Photosize (10 x 15), UK Quatro, 16K, Kai16, Kai32, Postcard, Custom: length 148 - 297 mm, width 92 - 215.6 mm 92 - 215.6 mm 148 - 297 mm Plain paper (60 ~ 90 gsm), Special paper (60 ~ 210 gsm), Envelope, Postcard A4, A5, B5, A6, B6, LT, GLT, LGL, GLG, EXE, HLT/Statement, Photosize (10 x 15), Folio/F4, UK Quatro, Foolscap, SP Folio, 16K, 81/2 x 131/2, 81/8 x 13 1/4, Kai16, Kai32, Custom: length 148 - 356 mm, width 92 - 216 mm Monarch, Com-#10, C6, DL, ISO-B5, Chou#3, Chou#4, J-Postcard, Double Postcard 92 - 216 mm 148 - 356 mm 60 - 210 gsm Up to 850 sheets (100-sheet MP tray + 250-sheet paper cassette + 1 x optional 500-sheet paper cassette) Up to 150 sheets, 80 gsm plain paper
PRINTER INTERFACE STANDARD NETWORK PROTOCOLS		USB 2.0 Hi-Speed (device) USB 1.1 (host) Ethernet (10Base-T/100Base-TX/1000Base-TX) TCP/IP: IPv4, IPv6: DHCP/BOOTP/RARP/AutolP, IPv6, Ipsec, Ipsec (IKE/Pre-shared key, IGMP, IPv6: DHCPv6, DHCPv6 Lite (only Get DNS Server Address) Protocol: LPD, Port9100, IPP, IPPS, NetWare/IPX, SLP, AppleTalk, FTP Server, Telnet, SNMPv1, SNMPv2c, SNMPv3, SNMP/UDR, SNMP/IPX, SNMP/POP3, HTTP, HTTPS, Bonjour (mDNS), ITTP, DNS, DDNS, LLNMR, SNTPr, WSA (Print)
MEMORY STANDARD MAXIMUM		256 MB DDR2 768 MB DDR2 (with optional 512 MB module)
POWER REQUIREMENTS POWER CONSUMPTION OPERATING READY SLEEP		560W or less 140W 34W
ENVIRONMENTAL CONDITIONS TEMPERATURE HUMIDITY NOISE LEVEL		OPERATING STORAGE OPERATING STORAGE PRINTING STANDBY 10 ~ 30°C 0 ~ 35°C 15 ~ 85% RH 30 ~ 80% RH 52.5dB 33dB
PRINTER DRIVER / UTILITIES PRINTER DRIVER USER GUIDE		Windows® XP (32bit/64bit) / Vista (32bit/64bit) / Server 2003 (32bit/64bit) / Server 2008 (32bit/64bit) / Windows® 7 Mac OS X 10.3.9 ~ 10.6 Linux: Red Hat Enterprise 4/5 / SUSE Enterprise 9/10 Windows® XP (32bit/64bit) / Vista (32bit/64bit) / Server 2003 (32bit/64bit) / Server 2008 (32bit/64bit) / Windows® 7 Mac OS X 10.3.9 ~ 10.6 Linux: Red Hat Enterprise 4/5 / SUSE Enterprise 9/10
PRINTER CONTROL LANGUAGE EMULATION STANDARD		PCL6, PCL5e, PCL5c, PostScript 3, PDF 1.7, XPS
CONSUMABLES TONER CARTRIDGE YELLOW TONER CARTRIDGE MAGENTA TONER CARTRIDGE CYAN TONER CARTRIDGE BLACK DOUBLE PACK BLACK TONER CARTRIDGE PHOTOCONDUCTOR UNIT YELLOW PHOTOCONDUCTOR UNIT MAGENTA PHOTOCONDUCTOR UNIT CYAN PHOTOCONDUCTOR UNIT BLACK WASTE TONER BOTTLE		PAGE YIELD 6,000 *1 6,000 *1 6,000 *1 6,000 *1 2 x 6,000 *1 30,000 30,000 30,000 30,000 9,000 ORDER CODE C13S050590 C13S050591 C13S050592 C13S050593 C13S050594 C13S051201 C13S051202 C13S051203 C13S051204 C13S050595
CONSUMABLES 500-SHEET PAPER CASSETTE 40GB HARD DISK DRIVE		ORDER CODE C12C802651 C12C824511

*1 The measuring method complies with ISO/IEC19798.



EPSON and EXCEED YOUR VISION are registered trademarks of Seiko Epson Corporation.

All other product names and other company names used herein are for identification purposes only and are the trademarks or registered trademarks of their respective owners.

EPSON disclaims any and all rights in those marks. Scan/Print samples shown herein are simulations. Specifications are subject to change without notice.



Official Partner
of Manchester United