

SHORT-THROW INTERACTIVE PROJECTORS

EB-421i/431i/426Wi/436Wi

EPSON
EXCEED YOUR VISION

INTERACTIVE PROJECTORS WITH SPACE DEFYING PERFORMANCE.



Epson's breakthrough 3LCD technology for brilliant short-throw projection now comes with fully integrated interactive features. Regardless of space constraints, Epson short-throw projectors deliver superb performance and more engaging discussions with dual simultaneous on-screen pen input that allows live annotations to be saved to your connected PC or laptop.



EB-421i/431i/426Wi/436Wi



Dual Interactive
Pens



Short
Throw



Resizeable
Preview
Window



16 W



iProjection

ENGINEERED FOR BUSINESS

Superb Short-Throw Performance

Its advanced short-throw lens with reduced glare and shadow interference delivers remarkably large and clear projection quality in small rooms.

Powerful Interactive Functions

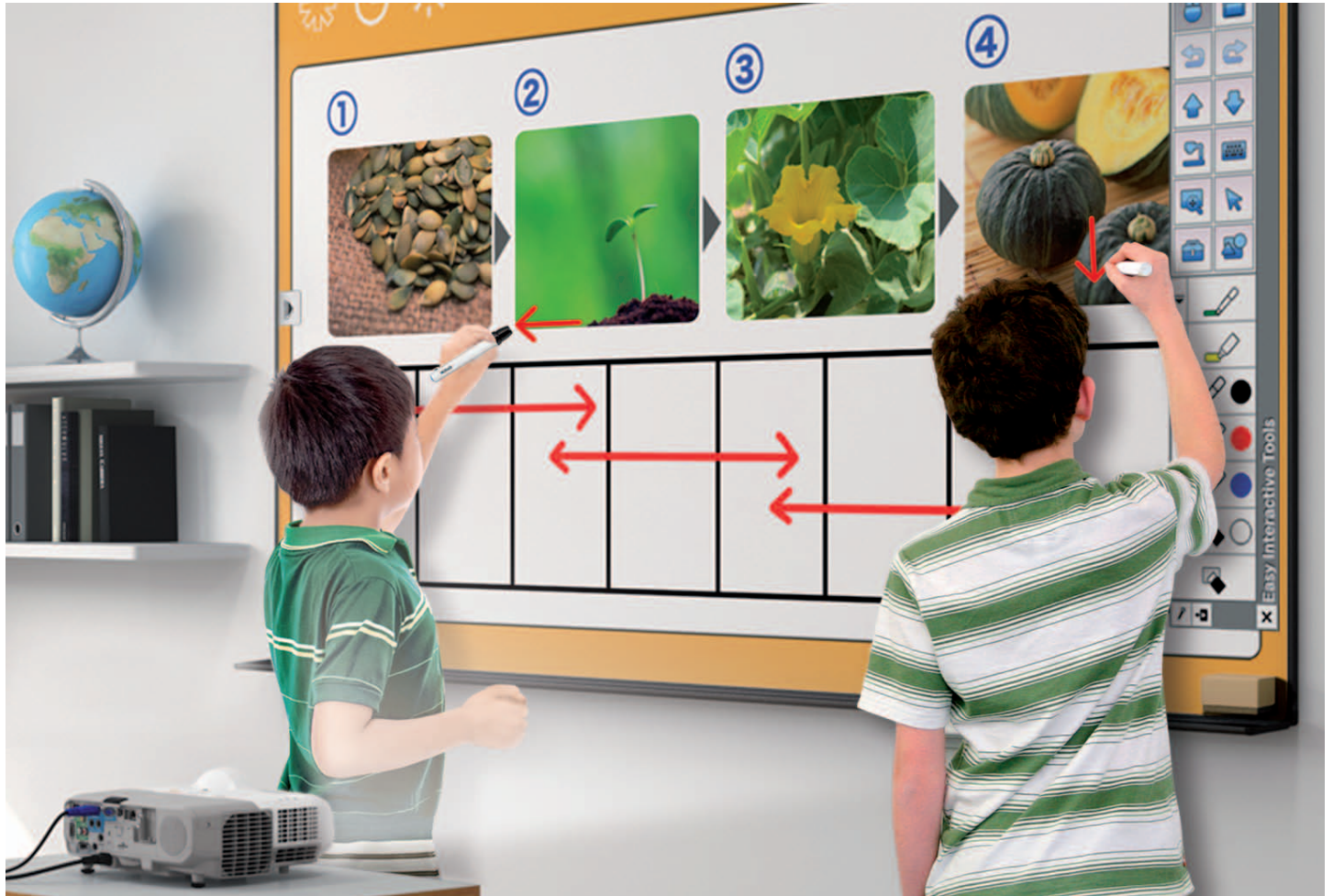
Two unique interactive pens let you easily conduct interactive discussions or presentations on almost any surface, with or without a PC.

Flexible Positioning

Flexible projection modes for Wall Mount, Ceiling Mount and Desktop allow you place the projector according to your needs.



Epson's latest short-throw projectors come with proven 3LCD technology for brilliant image quality and the ability to project large screen sizes even at close range. New interactive features open the doors for more creative presentations, allowing you to engage and participate with your audience like never before.



Superb Short-Throw Performance

With Epson short-throw projectors, you don't need a big room to project a large screen for maximum impact. The short focus lens also allows you to place the projector closer to the screen, thereby greatly reducing glare and shadows cast from the presenter. The result is a more conducive and comfortable experience for everyone in the room.



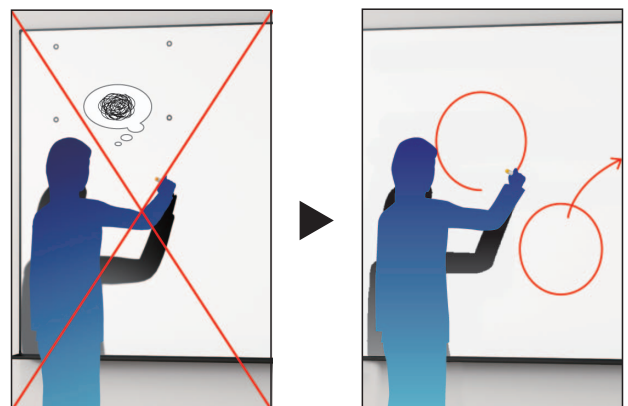
Conventional projector
with shadow interference

Epson Short Throw Projector

Powerful Interactive Functions

Easy Set-Up

Projector set-up is simply plug and play, with a one-time Auto Calibration and Auto resolution adjustment. No other drivers are required except for Mac OS.



Calibration with interactive pen during
setup can be skipped with the new
auto calibration feature

Users can advance straight to use
the interactive feature with a click
of the button

PC-free Interactivity

A true Epson Original – the EB-421i, 431i, 426Wi and 436Wi projectors can be annotated without a PC connection, enabling maximum interactivity with minimal requirements. Users can quickly and easily switch between PC-connected and PC-free modes by either using an interactive pen to activate a hot spot on screen, or by activating a dedicated button on the remote control.

Dual On-screen Pen

Two persons may write on-screen at the same time by just writing over the projections with Epson's interactive pens. They work like a computer mouse and are easily gripped by children and adults, allowing natural, on-screen annotation with a variety of input sources.



Flexible Positioning

Epson short-throw projectors give you greater possibilities for all kinds of creative applications. The projector can be mounted on a wall or set on a desktop and is effective on any surface, be it a flat wall, a whiteboard or even a chalkboard. This means you can easily take advantage of underutilised classroom space by turning any existing board into an interactive projection surface.



Desktop projection



Wall mount projection

Epson Easy Interactive Tools

The bundled Easy Interactive Tool software allows you to electronically annotate documents using the pen to highlight, draw and edit contents for more compelling presentations.

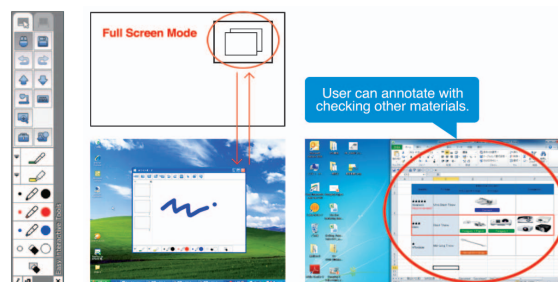
Integration with MS PowerPoint

When linked to a PC, you can write annotations and diagrams directly onto projected Microsoft® PowerPoint documents and save them in their original format for future editing.



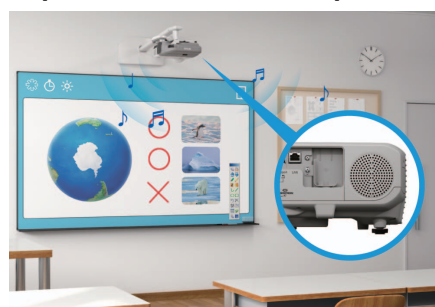
Multitask in White Board Mode

Users are fully able to use familiar PC functions such as Select, Copy, Paste, Move, Resize and other drawing tools to create and edit content on-screen. Increase productivity as the White Board mode can be minimised for users to annotate and reference to other files on their PC or laptop. Dual pen function is temporarily disabled when White Board mode is minimised.



Enhance Discussions with Powerful Audio

Impressive Built-in 16W Speaker



The integrated 16W speaker provides great audio quality for enhanced presentations. Voices are clearly audible even in large venues, which is ideally suited when teaching materials need to be recorded.

Wireless Audio Transmission

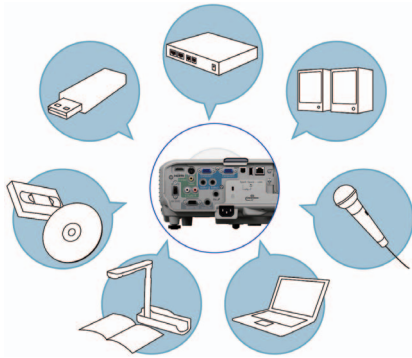


Besides direct PC connections, you can also connect this projector series wirelessly* to your LAN. The audio feed from a networked PC can then be transmitted wirelessly to the projector.

*Requires wireless network

Superb Built-in Connectivity

Epson short-throw projectors come with many networking features for seamless and engaging presentations.

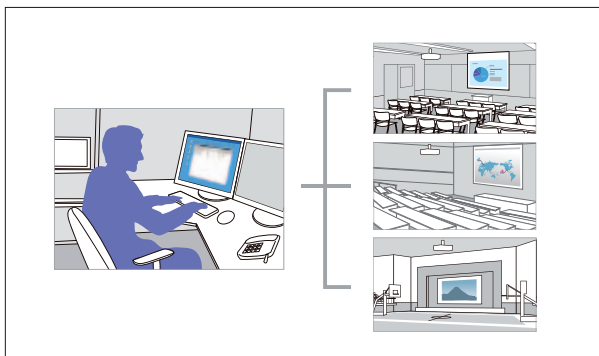


EasyMP Network Projection

The EasyMP Network Projection enables users to configure both wired and wireless connections with high quality audio output and conduct meetings simultaneously in up to four different locations.

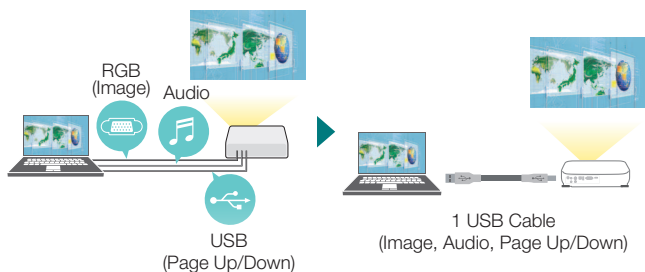
EasyMP Monitor

The EasyMP Monitor lets you efficiently monitor and configure multiple networked projectors from a single PC. You also have the ability to broadcast messages to all projectors for announcements or emergencies.



USB 3 in 1 Display

Image projection, sound transmission and mouse operation can all be conveniently carried out with a single USB connection, eliminating the hassle of separate and messy cabling.



Smarter Presentations from Mobile Devices

The iProjection application makes it possible for wireless projection from iOS and Android smart devices.* This feature supports various files and allows you to present your smartphone contents with ease. It also lets you use other touch-screen operations, such as flicking to turn pages and pinching to zoom in or out.

*In iProjection, projector profile search, multi-screen display, distribution function, audio transfer, movie file transfer, interrupt connection disabling and encryption data transfer capabilities are not supported.



Extend Your Interactive Reach

Users have the option of using the Interactive Pen Extension which effectively reduces shadow interference by allowing the presenter to interact with projected elements from a greater distance.



Eco Features

- Equipped with a E-TORL lamp engineered to maximise light usage and power efficiency
- Uses just 0.37W / 0.39W of power in standby mode
- Projector optics employ lead-free lenses
- Unpainted plastic housing reduces the environment impact
- The flame retardants used in the plastic housing do not contain chlorine or bromine

Better Products for a Better Future™

For more information on Epson's environmental programme, visit <http://global.epson.com/SR/environment>.

PARTNERS IN PERFECTION



Desktop Document Camera ELPDC20

3 kg/ 6.6lbs
2 megapixels with 30fps
12x optical zoom
1080p output resolution
HDMI digital connectivity



Desktop Document Camera ELPDC11

2.2kg / 4.85lbs
5 megapixels with 30fps
10 x digital zoom
bundled with microscope adaptor



Ultra Portable Document Camera ELPDC06

Easily portable; 0.96kg / 2.11lbs
1.92 megapixels with 15fps
4 x digital zoom
USB powered

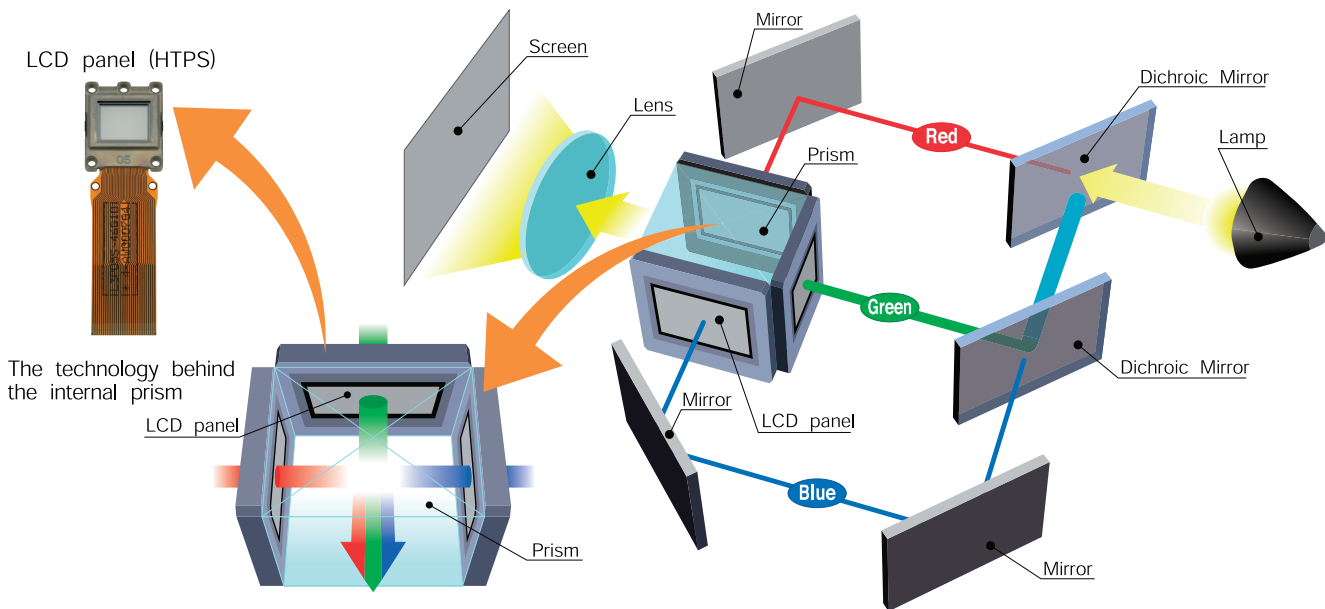
EPSON 3LCD TECHNOLOGY – FOR BRIGHT, FAITHFUL COLOURS

3LCD projectors offer brighter and more accurate colours as they produce different shades and hues by filtering, then mixing beams of the three primary colours (red, green and blue).

In a 3LCD projector, white light is first split into the three beams of primary colours. Each beam is then filtered through its own LCD that will give each individual pixel of the image its exact brightness for each colour. The colour beams are then perfectly recombined in a prism before being projected out as a complete image.

This compares to projectors using single-chip technology that actually project individual colours sequentially by filtering their single white light beam through a colour wheel, and then relying on human colour perception to combine the colours in the viewers' minds.

As a result, 3LCD projectors also offer greater detail, smoother gradations, no "colour breakup" effect, are easier on viewers' eyes, and consumer about 25% less power to achieve the same brightness compared to a single-chip projector using a lamp of the same wattage.



3LCD projector : RGB are projected at the same time, which makes the single composite image easy on the eyes.

- An independent test by projector review media ProjectorCentral.com in 2009 of about 800 projectors found that on average, 3LCD projectors use 25% less power than single-chip projectors.

www.3lcd.com

COLOUR LIGHT OUTPUT – TRUE COLOURS SHINING THROUGH

The Brightness Myth

Did you know that the brightness specification (in lumens) for projectors is only a measurement of its white light output?

In fact, many manufacturers artificially boost their projectors' brightness rating by increasing their white light production capability at the expense of colour brightness.

CLO to Enlighten

To help buyers make better-educated decisions, colour scientists at the U.S. government's National Institute of Standards and Technology (NIST – www.nist.gov) have developed Colour Light Output (CLO) as a specification to provide critical information on a projector's ability to deliver colour.

Colour Light Output is critically important because it measures the brightness of Red, Green and Blue. In a 3LCD projector, these primary colours create white when combined in the right proportions. Beautifully balanced colour is possible when Red, Green and Blue combine to produce the exact colours required. Colour Light Output provides users with an additional way to evaluate a projector and make more discerning buying decisions.

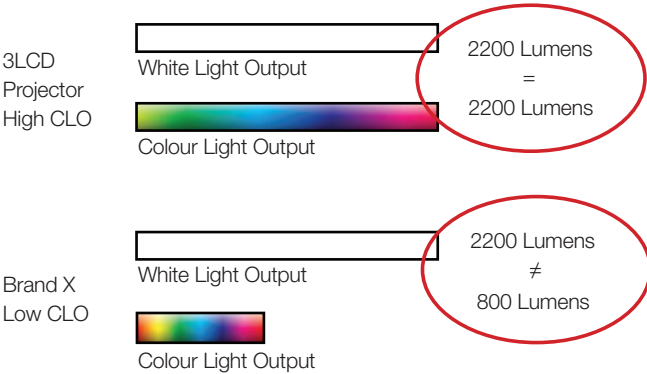
How is Colour Light Output measured?

| | | |
|---|---|---|
| X | X | X |
| X | X | X |
| X | X | X |

Brightness (or White Light Output) measures the total amount of white light projected in lumens on a nine point grid. It does not measure colour.



Colour Light Output uses 3 sets of a nine-point grid to measure the primary colours - red, green and blue, using the same approach used to measure White Light Output in lumens.



www.colorlightoutput.com

SPECIFICATIONS

EB-421i/431i/426Wi/436Wi

| MODEL NUMBER | | EB-421i | EB-431i | EB-426Wi | EB-436Wi |
|--|-----------------------|---|---------------------------|----------------------------|---------------------------|
| Projection Technology | | RGB liquid crystal shutter projection system (3LCD) | | | |
| Specifications of Main Parts | | | | | |
| LCD | Size | 0.55" with MLA (D8) | | 0.59" with MLA (D8) | |
| | Native Resolution | XGA | | WXGA | |
| Projection Lens | Type | No Optical Zoom / Focus (Manual) | | | |
| | F-Number | 1.80 | | | |
| | Focal Length | 6.48mm | | | |
| | Zoom Ratio | 1 - 1.35 (Digital Zoom) | | | |
| | Throw Ratio | 0.55 - 0.74 (Wide - Tele) | | 0.48 - 0.65 (Wide - Tele) | |
| Lamp | Type | 200W UHE (E-TORL) | 230W UHE (E-TORL) | 200W UHE (E-TORL) | 230W UHE (E-TORL) |
| | Life (Normal / Eco)*1 | 5,000 hours / 6,000 hours | 4,000 hours / 5,000 hours | 5,000 hours / 6,000 hours | 4,000 hours / 5,000 hours |
| Screen Size (Projected Distance) | | | | | |
| Zoom: Wide | | 50" - 108" [0.54m - 1.22m] | | 53" - 116" [0.54m - 1.22m] | |
| Zoom: Tele | | 37" - 80" [0.54m - 1.22m] | | 40" - 86" [0.54m - 1.22m] | |
| Standard Size | | 87" screen 0.97m | | 93" screen 0.97m | |
| Brightness*2 | | | | | |
| White Light Output (Normal / Eco) | | 2,500lm / 2,000lm | 3,000lm / 2,100lm | 2,500lm / 2,000lm | 3,000lm / 2,100lm |
| Colour Light Output | | 2,500lm | 3,000lm | 2,500lm | 3,000lm |
| Contrast Ratio | | | | | |
| 3,000 : 1 | | | | | |
| Internal Speaker(s) | | | | | |
| Sound Output | | 16W (Monoaural) | | | |
| Keystone Correction | | | | | |
| Vertical / Horizontal | | ±7° / ±5° | | | |
| Connectivity | | | | | |
| Analogue Input | D-sub 15pin | 2 (Blue) | | | |
| | Component | D-sub 15pin (Blue molding) x 2 (in common with Analog RGB connector) | | | |
| | Composite | RCA x 1 (Yellow) | | | |
| | S-Video | Mini DIN x 1 | | | |
| Digital Input | HDMI | 1 (HDCP supported) | | | |
| Output Terminal | D-sub 15pin | 1 (Black) | | | |
| Audio Input | RCA (Red / White) | 1 pair | | | |
| | Stereo Mini-jack | 2 | | | |
| Audio Output | Stereo Mini-jack | 1 | | | |
| Others | USB Type A | 1 (USB Memory / ELPDC06 Document Camera) | | | |
| | USB Type B | 1 (USB Display, mouse, K/B, Interactive) | | | |
| | Microphone Input | Stereo mini-jack x 1 | | | |
| Control I/O | RS-232C | D-sub 9pin x 1 | | | |
| Network | Wired LAN | RJ45 x 1 (10/100 Mbps) | | | |
| | Wireless | Optional (ELPAP07) | | | |
| Wireless Specifications | | | | | |
| Supported Speed For Each Mode | | IEEE 802.11b: 11 Mbps*3 IEEE 802.11g: 54 Mbps*3 IEEE 802.11n: 130 Mbps*3 | | | |
| Wireless LAN Security | | WEP, WPA-PSK(TKIP/AES), WPA2-PSK(TKIP/AES) | | | |
| Operating Temperature | | 5 °C to 35 °C <41°F to 95 °F> (20% - 80% humidity, unfrozen) | | | |
| Operating Altitude | | 0m - 2,286m <0ft - 7,500ft> (over 1,500m / 4,921ft: with high altitude mode) | | | |
| Direct Power On/Off | | Yes/Yes | | | |
| Start-up Period | | Less than 7 seconds, Warm-up period: 30 seconds | | | |
| Cool Down Period | | Instant Off | | | |
| Air Filter | Type | Electrostatic Filter | | | |
| | Maintenance Cycle | 5,000H*4 | | | |
| | Power Supply Voltage | 100V - 240V AC ±10%, 50Hz / 60Hz | | | |
| Power Consumption (220-240V) | | | | | |
| Lamp On (Normal / Eco) | | 292W / 246W | 327W / 244W | 292W / 246W | 327W / 244W |
| Stand By (Network On / Off) | | 6.8W / 0.39W | 7.3W / 0.37W | 6.8W / 0.39W | 7.3W / 0.37W |
| Dimensions Excluding Feet (W x H x D) | | | | | |
| 345mm x 105mm x 300mm | | | | | |
| Weight | | 3.9kg | 4.1kg | 3.9kg | 4.1kg |
| Fan Noise (Normal / Eco) | | 35dB / 28dB | 37dB / 29dB | 35dB / 28dB | 37dB / 29dB |
| Interactive Specification | | | | | |
| Basic Specification Technology | | Infrared | | | |
| | Input Devices | Digital Pen (Easy Interactive Pen 1 and 2) | | | |
| | Connection to PC | USB, Network | | | |
| | Calibration | Auto / Manual (25points) | | | |
| | Functions | Hover, Right click, Auto Adjust Pen Area | | | |
| Computer Interactive Driver Installation | | Windows, Linux*5: No Installation required, Mac OS X: Installation required. | | | |
| Multi-Pen Support | | Yes (with Easy Interactive Tools Ver.2.10). Up to 2 types of pens. (Easy Interactive Pen 1 and 2) | | | |
| Instant Annotation Multi-Pen Support (PC-Less) | | Yes. Up to 2 types of pens. (Easy Interactive Pen 1 and 2) | | | |
| Whiteboard Function | | Yes | | | |

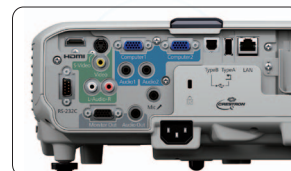
Supplied accessories

Power Cable: 4.5m
 USB Cable: 5m
 Remote Control: Compact Type
 Battery: Alkaline AA Battery x 2
 Interactive Pen x 2 (EB-421i x 1)
 Pen Tray (EB-431i/426Wi/436Wi)
 Bundled Software: Epson Projector Software (CD-ROM)
 Password Protect Sticker
 User's Manual Set: CD-ROM

Optional accessories

Spare Lamp: ELPLP61 (EB-431i/436Wi)
 ELPLP60 (EB-421i/426Wi)
 Air Filter Set: ELPAF36
 Wireless LAN Card: ELPAP07
 Quick Wireless Connection USB Key: ELPAP09
 Soft Carrying Case: ELPKS66
 Easy Interactive Pen 1: ELPPN03A
 Easy Interactive Pen 2: ELPPN03B
 Easy Interactive Pen Extension: ELPPE01
 Replacement Pen Tip: ELPPS01
 USB Extension Cable: ELPKC31
 Short Throw Wall Mount: ELPMB27

EB-421i/EB-431i/EB-426Wi/EB-436Wi



*1 Lamp life will vary depending upon mode selected, environmental conditions and usage. Lamp brightness decreases over time.

*2 Colour brightness (colour light output) and white brightness (white light output) will vary depending on usage conditions. Colour light output measured in accordance with IDMS 15:4; white light output measured in accordance with ISO 21118.

*3 Maximum speed and range is achievable when used with same enhanced mode technology. Actual data rates, features and performance may vary depending on your computer system, the environment and other factors.

*4 When used in the general office environment (the amount of floating dust: 0.04-0.2 mg/m3). Based on the Epson's in-house test results.

*5 Selected Linux distribution only

© 2013 Epson Singapore Pte Ltd. All Rights Reserved. Reproduction in part or in whole, without the written permission from Epson, is strictly prohibited. EPSON and EXCEED YOUR VISION are registered trademarks of Seiko Epson Corporation. All other products names and other company names used herein are for identification purposes only and are the trademarks or registered trademarks of their respective owners. Epson disclaims any and all rights in those marks. Print samples shown are simulations only. Specifications and product availability are subject to change without notice and may vary between countries. Please check with local Epson offices for more information.



Official Partner
of Manchester United