

HIGH BRIGHTNESS BUSINESS PROJECTORS EB-1975W/1970W/1985WU/1980WU

EPSON
EXCEED YOUR VISION



**GO BEYOND HD. GO HASSLE-FREE.
MIRROR YOUR CONTENT WITH EASE.**

Ideal for meetings or presentations, and enhanced with the ability to play videos – the EB-1970/80 series of high brightness business projectors displays your desired content with ease and style. Experience the convenience of its wireless mirroring projection capability – without having the hassle to install software, all you need is a WiDi/Miracast-compatible device and you'll be projecting quality images that go beyond Full HD. Discover user-friendly value with Epson's EB-1970/80 series of high brightness business projectors.



EB-1975W/1970W/1985WU/1980WU

- | | | | | | | |
|---|--|--|---|---|---|--|
| 
*Wireless Projection w/o Software | 
**Beyond Full HD Resolution | 
Multi-PC Projection | 
2 x HDMI | 
Split Screen | 
3-in-1 USB Display | 
16W Speaker |
|---|--|--|---|---|---|--|

ENGINEERED FOR BUSINESS

Beyond Full HD Resolution

Enjoy the best of Full HD resolution with higher definition, image quality and a wider screen size with its WUXGA resolution.

Convenient Wireless Mirroring Projection

Project your content, transmit Full HD video and sound wirelessly from compatible mobile devices and laptops without the need for software installation.

Wide Range of Connectivity

Connectable with wide range of sources, including HDMI inputs, USB memory devices and offers rich network features like EasyMP monitor and remote configuration.



*Wireless Projection without Software Installation applies to EB-1975W and EB-1985WU only.
**Beyond Full HD Resolution applies to EB-1980WU and EB-1985WU only.

Epson's EB-1970/80 series combines dynamic image quality and exceptional versatility to deliver brilliant presentations that shine. With stunning resolution beyond Full HD, an incredible 10,000:1 contrast ratio and up to 5,000 lumens of colour light output, you'll be able to project dazzling presentations time after time.



Beyond Full HD Resolution*

Enjoy a dynamic viewing experience on a larger and wider screen size with incredible WUXGA resolution.* Deliver superb high-resolution image displays from video output devices such as PCs and smart devices and watch your 3D CAD, digital broadcast, Blu-ray, Internet movies and other graphic-intensive media come to life in Full HD video.

* Applicable on EB-1980WU/1985WU only.



Convenient Wireless Mirroring Projection*

Project contents wirelessly from compatible smart devices and laptops without any software installation with the Intel WiDi/Miracast*. The technology enables easy wireless transmission of Full HD video and sound from PCs and smart devices, eliminating the hassle of a physical connection and eradicating issues with setting up. With support for screen mirroring**, projecting your tablet and laptop screens has never been easier.

* Applicable on EB-1975W/1985WU only.

** If the WiDi/Miracast function is activated, other network features will be disabled.



Wide Range of Connectivity

Full Compatibility

Advanced connectivity features mean convenient and hassle-free projections of your presentations. With a wide-ranging interface, these projections not only correspond with multiple conventional analogue sources, they are also compatible with HDMI input. In addition, one of the two HDMI input terminals is MHL-enabled for the mirroring of Android mobile devices.

Simply connect your MHL-compatible device with the MHL cable to fully enjoy your contents on the big screen. What's more, when connected, you can charge your Android mobile devices and operate it using the projector's remote control.



iProjection

With the iProjection application for both iOS and Android, wireless** projection from a smart device is possible. This feature supports various files and allows you to present your smartphone contents with ease. It also lets you use other touch-screen operations, such as flicking to turn pages and pinching to zoom in or out.



* In iProjection, projector profile search, multi-screen display, distribution function, audio transfer, movie file transfer, interrupt connection disabling and encryption data transfer capabilities are not supported.

** For EB-1980WU, a wired LAN connection with a wireless LAN access point is required.

Projection Versatility and Setup Flexibility

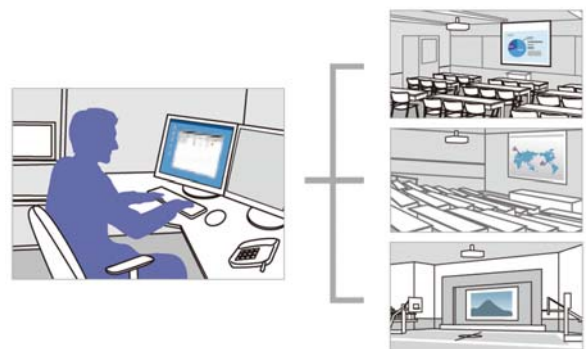
Split Screen

Split screen allows inputs from two separate sources to be displayed side by side on the same screen. In a video conference, for example, images of presentation materials and remote participants can be shown simultaneously.



EasyMP Monitor

With Epson's network monitoring and control software, you can see from a single PC which projectors are available and whether they are running efficiently – even across the biggest networks. You can configure your projectors and access their serial numbers remotely, as well as receive instant email alerts for pre-defined critical indicators such as non-functioning devices or overheating lamps. Each projector's serial number can also be accessed remotely via LAN/serial connection.



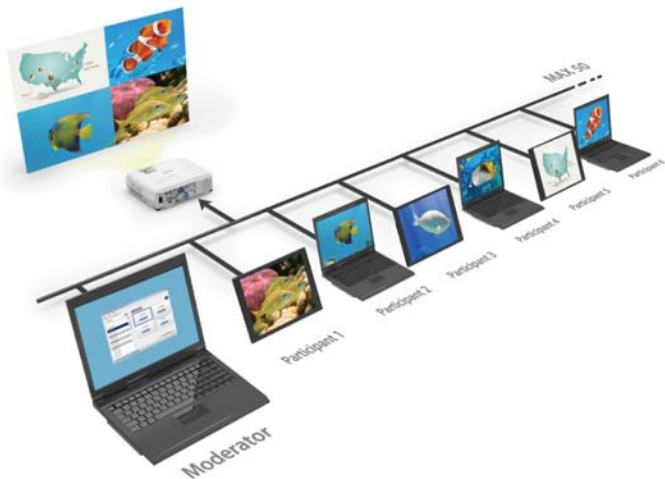
PC-free

Simply save JPEG, PDF, GIF, PNG, BMP, Motion JPEG and FS files to a USB device, insert it into the projector and the files are projected automatically. You can just bring the data along without the need for a PC.



Multi-PC Projection

With the control of a host PC, up to 50 terminals can be connected via the multi-PC projection from a single projector. The host PC acts as a moderator, selecting media from up to 4 terminals to be projected simultaneously. With the moderator function, you can maintain control and prevent tampering with what's projected on screen.



Vertical and Horizontal Keystone Adjuster

Deliver powerful presentations anywhere in the room. With automatic keystone detection and adjustment, there is no longer any need for awkward and time-consuming manual image adjustments that interrupt the smooth flow of your presentation delivery. This handy feature automatically detects the projector's vertical keystone distortion and corrects it instantly.



Focus Help

With the Focus Help button, you can adjust the focus easily by looking at the figure and bar gauge displayed on the screen during adjustment.



Screen Fit

In cases where the image extends beyond the frame of the screen or whiteboard, simply push the "Screen Fit" button to automatically adjust the image frame with the edges of the screen.



Superb Sound Quality

With the built-in 16W speaker, you can enjoy dynamic audio playback wherever you are, even at the back seats of the room.



Clear Images with Accurate Details

Clear, Impressive Presentations

With a greater than 4,000 lm brightness setting and incredible 10,000:1 contrast, drawing the curtains or switching off the lights during presentations is a thing of the past. This projector series features high image visibility even in a well-lit meeting room, enabling participants to concentrate better and improving the productivity of the meeting.



Farouja DCDi – Enhanced Sharpness

Greater depth and perception add appeal to your presentations. With TrueLife enhancement, a sharpness enhancement technology, the projector identifies and enhances transitions, such as skin texture, freckles and hair, to produce images with remarkable clarity and colour. Presentations have never been more compelling, with videos and images that are more visible and lifelike.



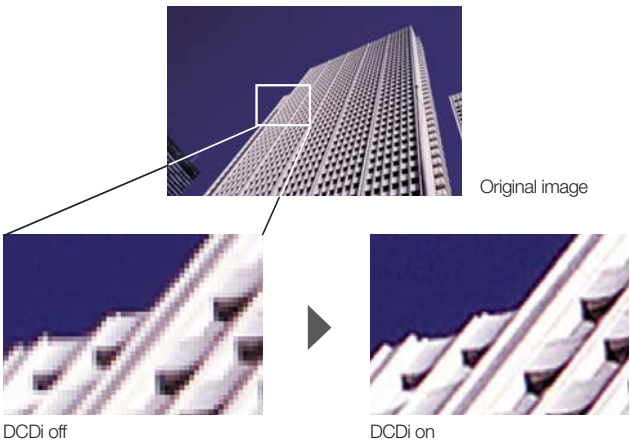
Without DCDi



With DCDi

Farouja DCDi – Eliminate Jagged Lines

This projector series features Faroudja DCDi® (Directional Correlational Deinterlacing) Cinema chipset, a video enhancement technology that produces an exceptional image quality without introducing artefacts. Faroudja DCDi was developed to eliminate jaggedness by using a unique algorithm, so your video-based presentations remain sharp all the time.

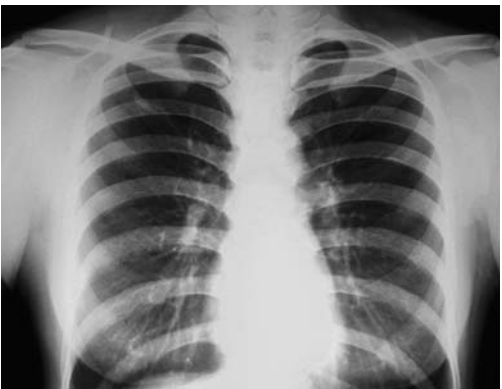


DICOM SIM Mode

This colour mode produces images with clear shadows, ideal for projecting X-rays and other medical images.*



Normal colour mode



DICOM SIM mode

* Not for actual medical diagnosis.

Ease-of-use

Auto Power On

With the auto power on function, your projector will automatically turn on once the projection signal is detected via VGA cable, providing you with an easy and hassle-free presentation.



Firmware Updates

Easily update your projector's firmware without having to bring it to a service centre. To update, simply insert a USB memory stick with the necessary updates. Updates can be done over LAN network or via USB-B connection.



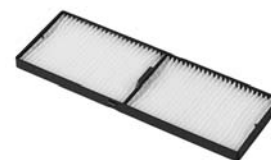
Longer Lamp Life

With a long lamp life of 4,000 hours in eco-mode, the frequency of costly lamp replacements is reduced, saving you time and money.



Cleanable Filter

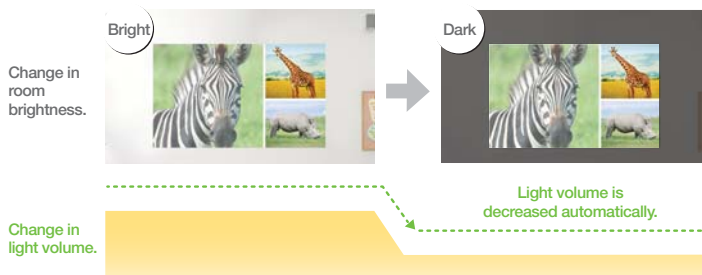
Cleanable filters mean the projector's air filters can be cleaned periodically, making them last longer and minimising the need for a replacement. The maintenance cycle for ELPAF41 is 5,000 hours.



Environmentally-friendly

Auto-brightness Adjustment

Save energy consumption and do your part for the environment with the new eco-friendly auto-brightness adjustment. The luminance sensor detects the brightness level of the environment and adjusts the projector's brightness automatically, giving you power and cost savings. This function can be turned on/off according to your preference.



Scheduler Function

Reduce power consumption and do your part for the environment with the schedule projector action. With this function, you can programme the projector to automatically turn on and shut down at fixed times daily.



Eco Features

- Uses just 0.34W of power in standby mode
- Projector optics employ lead-free lenses
- Unpainted plastic housing reduces the environment impact
- The flame retardants used in the plastic housing do not contain chlorine or bromine

Better Products for a Better Future™

For more information on Epson's environmental programmes, visit <http://global.epson.com/SR/environment>.

PARTNERS IN PERFECTION

Wireless LAN Adaptor ELPAP07



Supports 802.11 b/g/n connection
Compatible with all Epson wireless-enabled projectors

Desktop Document Camera ELPDC20



3kg / 6.6lbs
2 megapixels with 30fps
12 x optical zoom
1080p output resolution
HDMI digital connectivity

Ultra portable Document Camera ELPDC06



Easily portable; 0.96kg / 2.11lbs
1.92 megapixels with 15fps
4 x digital zoom
USB powered



SEE VIBRANT, REALISTIC COLOURS WITH HIGH COLOUR BRIGHTNESS.

A New Specification

Projectors have always had their brightness rated only for white light. However, they may have very different colour brightness levels. The Colour Brightness specification provides a new way for buyers to compare the holistic performance (white and colour light brightness) of projectors to make a more informed decision.



Epson
Colour Brightness 2600 Lumens
White Brightness 2600 Lumens

Competitor
Colour Brightness 750 Lumens
White Brightness 2700 Lumens

What is Colour Brightness?

As the term implies, Colour Brightness is a new international standard that states a projector's colour light output in lumens. It measures the brightness of a projector's red, green and blue light.

These are the measurements to look for:

Colour Brightness - Colour Light Output

White Brightness - White Light Output



Epson

Competitor

* Compared against similarly-priced leading 1-chip DLP® business and education projectors based on NPD data from July 2011 through June 2012 (available from www.npd.com). Colour brightness (colour light output) measured in accordance with IDMS 15.4. Actual colour brightness will vary depending on actual usage conditions. 3LCD® is a registered trademark of Seiko Epson Corporation. DLP® is a registered trademark of Texas Instruments, Inc. and its use here does not imply any affiliation with or endorsement by them.

Why Does Colour Brightness Matter?

Even if a projector has high white brightness, its Colour Brightness could be as low as 1/3 of its white light brightness specification. With a projector that has high Colour Brightness, you'll see vibrant, realistic colours; but if Colour Brightness is low, colours can look dull and dark, skin tones can be reproduced poorly and important details can be lost.

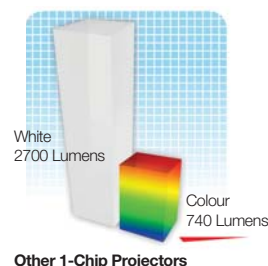
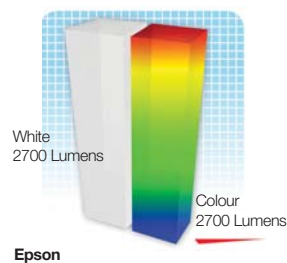


Epson

Competitor

How to Find a Projector's Colour Brightness?

1. Look for separate Colour Brightness and white brightness specification.
2. Projectors with similar white brightness levels can have vastly different and significantly lower Colour Brightness levels.
3. Many manufacturers may not want you to know their projectors are only 1/3 as bright when measuring colour.



www.epson.com.sg/colourbrightness

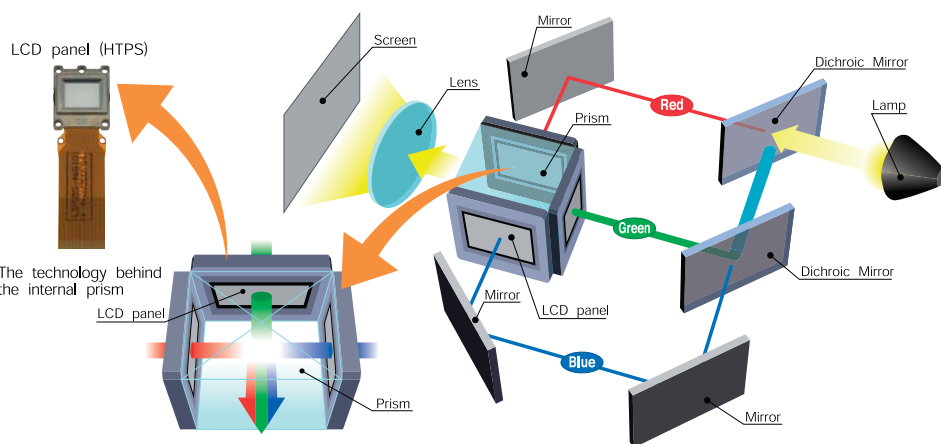
EPSON 3LCD TECHNOLOGY – FOR BRIGHT, FAITHFUL COLOURS

3LCD projectors offer brighter and more accurate colours as they produce different shades and hues by filtering, then mixing beams of the three primary colours (red, green and blue).

In a 3LCD projector, white light is first split into the three beams of primary colours. Each beam is then filtered through its own LCD that will give each individual pixel of the image its exact brightness for each colour. The colour beams are then perfectly recombined in a prism before being projected out as a complete image.

This compares to projectors using single-chip technology that actually project individual colours sequentially by filtering their single white light beam through a colour wheel, and then relying on human colour perception to combine the colours in the viewers' minds.

As a result, 3LCD projectors also offer greater detail, smoother gradations, no "colour breakup" effect, are easier on viewers' eyes, and consume about 25% less power to achieve the same brightness compared to a single-chip projector using a lamp of the same wattage.



3LCD projector : RGB are projected at the same time, which makes the single composite image easy on the eyes.

• An independent test by projector review media ProjectorCentral.com in 2009 of about 800 projectors found that on average, 3LCD projectors use 25% less power than single-chip projectors.



www.3lcd.com

SPECIFICATIONS

EB-1975W/1970W/1985WU/1980WU



MODEL NUMBER		EB-1975W	EB-1970W	EB-1985WU	EB-1980WU
Projection Technology		RGB liquid crystal shutter projection system (3LCD)			
Specifications of Main Parts					
LCD	Size	0.76" wide panel with MLA (D8)			
	Native Resolution	WXGA (1280 x 800)		WUXGA (1920 x 1200)	
Projection Lens					
Type	Optical Zoom (Manual) / Focus (Manual)				
F-Number	1.5 - 2.0				
Focal Length	23 - 38.4mm				
Zoom Ratio	1 - 1.6				
Throw Ratio	1.38 - 2.28 (Wide - Tele)				
Lamp					
Type	280W UHE				260W UHE
Life (Normal / Eco) ¹⁾	3,000 hours / 4,000 hours				
Screen Size (Projected Distance)					
Zoom: Wide	30" - 300" [0.86 - 8.95m]			50" - 300" [1.46 - 8.95 m]	
Zoom: Tele	30" - 300" [1.45 - 14.79m]			50" - 300" [2.43 - 14.79 m]	
Standard Size	120" screen 3.56 - 5.89 m			120" screen 3.56 - 5.89 m	
Brightness ²⁾					
White Light Output (Normal / Eco)	5,000lm / 3,500lm			4,800lm / 3,400lm	4,400lm / 3,400lm
Colour Light Output	5,000lm			4,800lm	4,400lm
Contrast Ratio					
10,000:1					
Internal Speaker(s)					
Sound Output	16W x 1				
Geometric Correction					
Keystone Correction					
Vertical / Horizontal	±30° / ±30° (Zoom: Tele)				
Auto Keystone Correction	Yes				
Screen Fit	Yes				
Quick Corner	Yes				
Connectivity					
Analog Input	D-Sub 15Pin	2 (Blue)			
	Component	D-Sub 15pin x 2 (Blue) (common with Analog RGB connector)			
	Composite	RCA x 1 (Yellow)			
Digital Input	HDMI	2 (HDCP Supported) (HDMI 1 supports MHL)			
Output Terminal	D-Sub 15pin	1 (Black)			
Audio Input		3 (1 RCA, 2 Stereo mini jack)			
Audio Output		1 Stereo mini jack			
USB Interface	USB Type A	1 (for USB Memory, Document Camera, Firmware Update)			
	USB Type B	1 (for USB Display, Mouse, K/B, Control, Firmware Update)			
Control I/O	RS-232C	D-Sub 9pin x 1			
Network	Wired Lan	RJ45 x 1 (100Mbps)			
	Wireless	Optional (ELPAP07)			N/A
Wireless Specifications					
Supported Speed For Each Mode		IEEE 802.11b: 11Mbps ³⁾ , IEEE 802.11g: 54Mbps ³⁾ , IEEE 802.11n: 130Mbps ³⁾			N/A
Wireless Lan Security		WPA-PSK (TKIP/AES) / WPA2-PSK (TKIP/AES)			N/A
Wireless Specifications (Intel WIDI/Miracast)					
Supported Speed For Each Mode		IEEE 802.11n (2.4GHz): 130Mbps ⁴⁾ IEEE 802.11n (5GHz): 130Mbps ⁴⁾	N/A	IEEE 802.11n (5GHz): 130Mbps ⁴⁾	N/A
Supported Connection Mode		Wi-Fi Direct	N/A	Wi-Fi Direct	N/A
Operating Temperature					
5 - 35 °C <41 - 95 °F> (20% - 80% humidity, unfrozen)					
Operating Altitude					
0 - 2,286 m <0 - 7,500 ft> 5 - 35 °C 2,287 - 3,000 m 5 - 30 °C (over 1,500m / 4,921ft: with high altitude mode)					
Direct Power On / Off					
Yes					
Start-Up Period					
About 10 seconds, Warm-up Period: 30 seconds					
Cool Down Period					
Instant Off or Under 3 seconds					
Air Filter	Type	High Efficiency Filter			
	Maintenance Cycle	5,000 hours ⁵⁾			
Power Supply Voltage					
100 - 240 V AC ±10%, 50/60 Hz					
Power Consumption (220 - 240V)					
Lamp On (Normal / Eco)	411W / 316W				388W / 316W
Standby (Network On / Off)	3.5W / 0.34W				
Dimension Excluding Feet (D X W X H)					
291 x 377 x 110 mm					
Weight	4.6kg	4.5kg	4.6kg	4.5kg	
Fan Noise (Normal / Eco)					
39dB / 31dB					

¹⁾ Lamp life will vary depending upon mode selected, environmental conditions and usage. Lamp brightness decreases over time.

²⁾ Colour brightness (colour light output) and white brightness (white light output) will vary depending on usage conditions. Colour light output measured in accordance with IDMS 15:4; white light output measured in accordance with ISO 21118.

³⁾ Maximum speed and range is achievable when used with same enhanced mode technology. Actual data rates, features and performance may vary depending on your computer system, the environment and other factors.

⁴⁾ These modes and actual data throughputs depend on supported wireless mode of source devices and/or environmental conditions.

⁵⁾ When used in the general office environment (the amount of floating dust: 0.04 - 0.2 mg/m³). Based on the Epson's in-house test results. 25°C (77°F)

Supplied Accessories

Power Cable: 1.8m
Computer Cable: 1.8m D-Sub 15pin (Male) - D-Sub 15pin(Male)
Remote Control: Yes, with Alkaline AA Battery x 2
Bundled Software: Epson Projection Software CD-ROM
User's Manual Set: CD-ROM

Optional Accessories

Spare Lamp: ELPLP77
Air Filter: ELPAF41
Wireless LAN Card: ELPAP07 (EB-1975W, 1970W, 1985WU)
Quick Wireless Connection USB Key: ELPAP09
Soft Carrying Case: ELPKS68
Ceiling Mount: ELPMB23

EB-1975W / 1970W / 1985WU / 1980WU



©2014 Epson Singapore Pte Ltd. All Rights Reserved. Reproduction in part or in whole, without the written permission from Epson, is strictly prohibited.

EPSON and EXCEED YOUR VISION are registered trademarks of Seiko Epson Corporation.

All other product names and other company names used herein are for identification purposes only and are the trademarks or registered trademarks of their respective owners.

Epson disclaims any and all rights in those marks. Projected images shown herein are simulations. The actual product design and contents may vary. Specifications are subject to change without notice and may vary between countries. Please check with local Epson offices for more information.

Apple, iPad and iPhone are trademarks of Apple Inc., registered in the U.S. and other countries. App Store is a service mark of Apple Inc.

Android is a trademark of Google Inc.

Information correct as at September 2014